

**Separate from and  
Dependent upon One  
Another: Humanities and  
Natural Sciences in  
Dialogue**



Leibniz Institute for  
the History and Culture  
of Eastern Europe

**4-6 July 2023  
GWZO Annual Conference**

**Getrennt und aufeinander  
angewiesen: Geistes-  
und Naturwissenschaften  
im Dialog**

# **Getrennt und aufeinander angewiesen: Geistes- und Naturwissenschaften im Dialog**

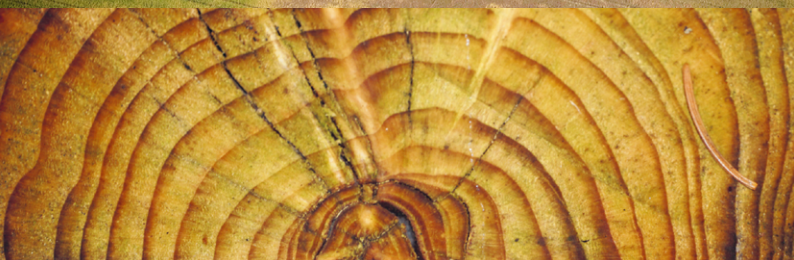
Im Fokus der Tagung stehen Ursachen und Konsequenzen ausgewählter Kooperationen zwischen geisteswissenschaftlichen und naturwissenschaftlichen Fächern. Laufende Forschungsprojekte werden vorgestellt und wissenschaftshistorisch in die Entwicklung von Kultur- und zur Naturgeschichte eingeordnet.

Vier Themenblöcke sind kooperativen Forschungen zu Archäologie, Geschichte und Kultur des mittleren und östlichen Europas gewidmet. Berichte aus der Arbeit interdisziplinärer Teams veranschaulichen, wie gemeinsam Fragestellungen mit gegenseitiger Relevanz entwickelt und gelöst werden.

# **Separate from and Dependent upon One Another: Humanities and Natural Sciences in Dialogue**

The conference focuses on the causes and consequences of specific cooperation between humanities and natural sciences. Ongoing research projects will be presented and positioned in the development of cultural history and natural history.

The four panels are dedicated to cooperative research in archaeology, history, and culture of Central and Eastern Europe. Reports by interdisciplinary teams will illustrate how questions of mutual relevance are developed and answered.



**Copper cauldron from Balatonlelle-Rádpusztza (Hungary, early 5th c. AD).**

Detailbild vom Kupferkessel aus Balatonlelle-Rádpusztza (Ungarn, frühes 5. Jh. n. Chr.). © Rippl Rónai Múzeum, Kaposvár, Foto: Krisztián Balla

**Ikervár (Hungary), neolithic circular ditch, aerial view.**

Ikervár (Ungarn), eine neolithische Kreisgrabenanlage aus der Luft. © Pécsi Légirégészeti Téma 24440, Foto: Otto Braasch

**Spruce timber with tree rings, Erzgebirge, Saxonia.**

Fichtenstamm mit Jahresringen, Erzgebirge, Sachsen. © Landesamt für Archäologie Sachsen, ArchaeoForest Projekt, Foto: Marta Korczyńska-Cappenberg

**Human skeleton from Oberleiserberg, grave 34 (Austria, 11th c. AD).**

Menschliches Skelett aus Oberleiserberg, Grab 34 (Österreich, 11. Jh.). Foto: Nina Richard

# Tuesday, July 4, 2023

**17.00–17.30**

## **Welcome**

Maren Röger, Director of the GWZO (Leipzig)

## **Introduction**

Frank Hadler and Orsolya Heinrich-Tamáska (Leipzig)

**17.30–18.30**

## **Keynote**

Jan Jakub Surman (Praha)

## **Historicising Interdisciplinarity: From a Power to Construct to Power of a Construct**

Comment: Karin Reichenbach (Leipzig)

Reception

# Wednesday, July 5, 2023

**9.00–11.00**

## **I: Artefacts and Materials**

Chair: Frank Hadler (Leipzig)

Stephen Merkel (Amsterdam), Orsolya Heinrich-Tamáska, Marcin Wołoszyn (Leipzig)

Unravelling Eastern Europe's past Through the Analysis of Late Antique Metals

Jana Grusková (Wien/Bratislava)

Wege und Methoden der Text-»Ausgrabungen« in ausgewählten Palimpsesten



Mirosław Piotr Kruk (Gdańsk) and Mariusz  
Kędzierski (Kraków)

New Perspectives for the Study of Wood Panel  
Paintings in the Light of Natural Sciences

Discussion

*11.00–11.15 Coffee Break*

**11.15–12.30**

**II: Climate and Landscape**

Chair: Martin Bauch (Leipzig)

Piotr Guzowski (Białystok)

Droughts as a Problem in Polish Agriculture in the Late  
Middle Ages and Early Modern Period

Christoph Zielhofer (Leipzig)

On the Way to the Fluvial Anthroposphere: Current  
Limitations and Perspectives of Multidisciplinary  
Research

Discussion

*12.30–13.30 Lunch*

**13.30–14.45**

Michael Doneus (Wien)

Landscape Archaeology as an Interface between  
Natural Sciences and Humanities

Adam Izdebski (Kraków/Jena)

Human Niche and the Rise of Capitalism: Modelling  
the Drivers of Ecosystem Change in Royal Prussia  
1300–1800 CE



Discussion

*14.45–15.15 Coffee Break*

**15.15–17.15**

**III: Time and Chronology**

Chair: Marcin Wołoszyn (Leipzig)

Arkadiusz Marciniak (Poznań)

What Makes the Neolithic in the Near East?

An Integrated Approach

Marek Vlach (Brno)

Radiocarbon Dating of the Roman military Presence  
in the Middle Danube Region

Klaus Cappenberg (Leipzig)

Kleiner Aufwand, großer Nutzen? Datierungsmethoden für minimalinvasive Untersuchungen im Osterzgebirge

Discussion

*17.15–18.00 Supper*

**18.00–19.00**

Mitchell G. Ash (Wien)

Gab es jemals nur zwei Kulturen? Historische Anmerkungen und Kommentare

Chair: Frank Hadler (Leipzig)



# Thursday, July 6, 2023

**9.00–10.15**

## **IV: Humans and Society**

Chair: Orsolya Heinrich-Tamáska (Leipzig)

Tivadar Vida (Budapest)

The HistoGenes Project: The Role of Archaeology

Zuzana Hofmanová (Leipzig)

The HistoGenes Project: The Role of Genetics on the Example of Avar Period Cemeteries

Discussion

*10.15–10.45 Coffee Break*

**10.45–12.00**

Bettina Jungklaus (Berlin)

Von der Grabung zum Bericht: Frühneuzeitliche Friedhöfe in Ostdeutschland aus anthropologischer Perspektive

Zuzanna Dziuban (Wien)

Forensic Science and the Production of the Dead in Post-Holocaust Poland

Discussion



**The Leibniz Institute for the History and Culture of Eastern Europe (GWZO)** carries out comparative historical and cultural research on the region bordering the Baltic, Black, and Adriatic seas, from the Early Middle Ages to the present. There are currently around 50 research scholars associated with the Institute, conducting work both in Germany and abroad and coming from the wide range of humanities. The Institute's activities are supported by a dense network of cooperative partnerships with Eastern and Central European as well as international research organizations.

**[www.leibniz-gwzo.de](http://www.leibniz-gwzo.de)**

Follow us on  Facebook  Twitter  YouTube  Instagram

## **Venue**

GWZO, Specks Hof (Entrance A), 4th floor  
Reichsstraße 4–6, 04109 Leipzig

## **Concept and Coordination**

Orsolya HeinrichTamáska (GWZO-Department »Humans and Environment«) und Frank Hadler (GWZO-Department »Entanglements and Globalisation«)

## **Scientific Committee**

Karin Reichenbach (GWZO-Department »Culture and Imagination«), Martin Bauch und Marcin Wołoszyn (GWZO-Department »Humans and Environment«)

## **Event Management**

Ines Röbler, [ines.roessler@leibniz-gwzo.de](mailto:ines.roessler@leibniz-gwzo.de)  
Julia Kuhre, [julia.kuhre@leibniz-gwzo.de](mailto:julia.kuhre@leibniz-gwzo.de)